

# HOW TO INSTALL YOUR



## Foldable Shower Seat

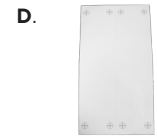
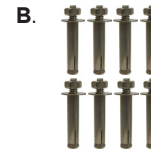
Item # 9404  
Capacity not to exceed 250 lb

Easy to follow  
step-by-step  
instructions

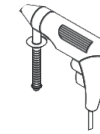


Remove all parts from the box. Ensure all parts are included before assembling.

- A. (1) Foldable Shower Seat
- B. (8) Sleeve Anchors
- C. (8) Frame Plugs
- D. (1) Adhesive Guide Strips



### TOOLS NEED-



Electric Drill



Drill Bit (9/32")



Socket & Ratchet



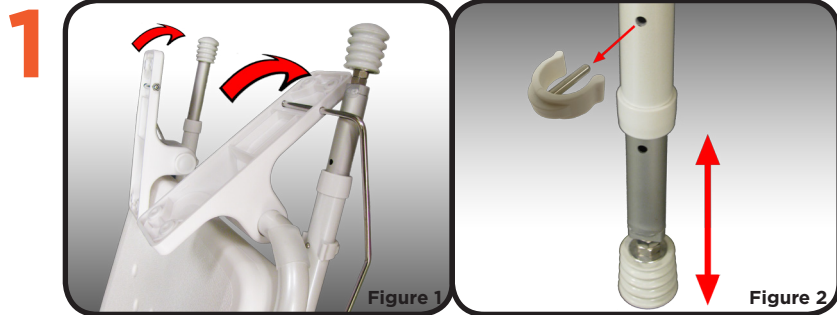
Hammer



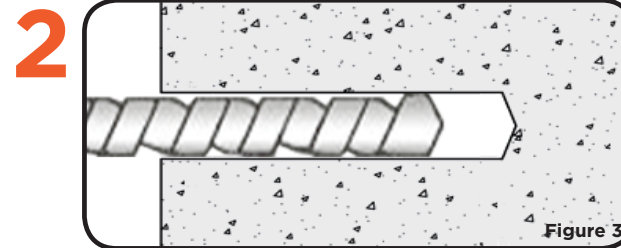
Pencil



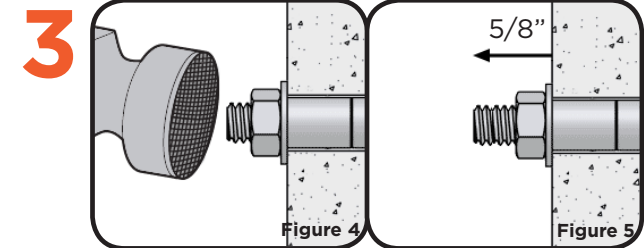
**DO NOT install onto wall studs. For concrete and/or sheetrock installation only.**



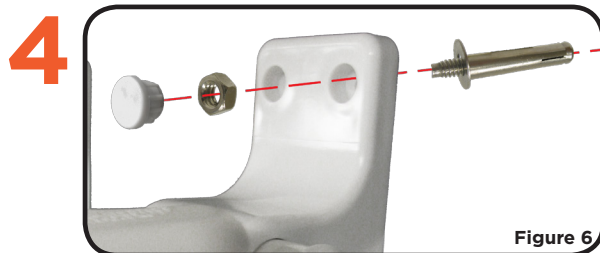
Open shower chair by unHINGING the two mounts from locked position (**Figure 1**). Place shower chair mounts flush against a wall and adjust to desired seat height. Remove "e-clips" on legs (**Figure 2**) and adjust the length to touch floor.



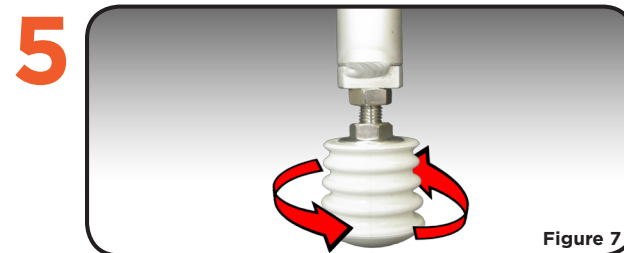
Mark a line at the top of the wall mounts with a pencil and remove the shower chair. Apply the adhesive guide strips under penciled positions. Use a 9/32" drill bit; drill holes 1/2" deeper than sleeve anchor at targets on adhesive guide strips (**Figure 3**). Clean out holes.



Hand-tighten nuts until snug against steel sleeves. Use a hammer to tap sleeve anchors into holes until washers are flush against the wall (**Figure 4**). Using a 10mm socket wrench, tighten nuts approximately three or four full turns until screws are 5/8" from wall (**Figure 5**). Sleeve anchors should be stabilized.



Remove the nuts, and with washers on the screws, place the shower chair on the wall so that the screws insert into the mounts. Place the nuts back on the screws and tighten with socket wrench two full turns. Insert frame plugs to cover nuts (**Figure 6**).



Bracket should be secure. Before using, test the chair by applying downward pressure to the seat. If needed, the left leg can be further adjusted (**Figure 7**) by unscrewing from the frame (apply locking nut afterward).



### WARNING

Read all instructions carefully and consult with a qualified professional before installing to avoid possible injury. **NOVA shall have no responsibility for failures resulting from improper installations.** Do not misuse the product.

### HOW TO USE

Pull down the seat from wall to open foldable shower seat. Always ensure that BOTH feet touch the ground. Check stability before use. Fold up the seat when not in use.

### CARE AND MAINTENANCE

Check regularly to make sure the Foldable Shower Seat is securely mounted to the wall. Use a mild detergent and warm water to clean.

## WARRANTY INFORMATION

NOVA stands firm on our commitment to providing the highest quality products, as well as exceptional service. This product was built to precise standards and thoroughly inspected prior to shipment. This warranty represents our confidence in the materials and workmanship of our product.

NOVA extends this warranty only to the original purchaser of this product. The warranty does not extend to any subsequent purchaser or owner. The warranty is void upon any sale or transfer of ownership or use by other person. NOVA warrants its products are free from defects in material and workmanship under NORMAL use for the period commencing upon the date of purchase and continuing for the following specified period of time after that date:

Metal Frame - Limited Lifetime Warranty

Non-Metal/Metal parts - One Year Limited Warranty

(rubber tips, plastic or metal hardware)

This warranty does not cover problems due to user negligence, misuse of the product, failure to adhere to product instructions, or normal wear and tear. Items that have been subject to negligent abuse, modified without prior written authorization are not covered within this warranty.

For warranty service, please contact the dealer from whom you purchased your NOVA product. In the event that you do not receive satisfactory service, please call us directly at the number on the bottom front of this sheet. Be prepared to indicate, the nature of the defect, the product serial number, and the name and location of where you purchased the product. You will also be required to provide a receipt of your purchase. Do not return any products to our office without prior consent.

Repair or replacement is the only remedy under this limited warranty. This warranty does not include any labor or shipping charges incurred in replacement part installation or repair of product.

**THIS WARRANTY IS EXCLUSIVE AND IN LIEU OF ALL OTHER EXPRESS WARRANTIES, IMPLIED WARRANTIES, IF ANY, INCLUDING THE IMPLIED WARRANTIES OF MERCHANTABILITY AND FITNESS FOR A PARTICULAR PURPOSE. NOVA SHALL NOT BE LIABLE FOR ANY SEQUENTIAL OR INCIDENTAL DAMAGES WHATSOEVER.**

Regular cleaning is recommended. Use a non-abrasive cleaner or detergent, rinse with warm water and dry completely. Abrasive cloths may damage the surface. Regularly inspect your item and its parts for any corrosion, breakage, compression or wear.

### IMPORTANT WARNING

**FOLLOW ALL DIRECTIONS CAREFULLY BEFORE USE. FAILURE TO DO SO MAY RESULT IN SERIOUS INJURY.**

- All legs must be adjusted to same height (number) so the shower seat sits level
- Make sure legs and mounts are secure (e-clips completely through hole) before using
- Check before each use
- Use on a level surface
- Do not stand on shower seat

**CONTACT US!**  
**We're here to help**

✉ [info@novajoy.com](mailto:info@novajoy.com)

☎ 1 800 557 6682

CARE • QUALITY • INNOVATION



THE NOVA PROMISE

Connect with us!

[novamedicalproducts.com](http://novamedicalproducts.com)

facebook: [novamedicalprod](#)

twitter: [novamedicalprod](#)

twitter: [novawalkerstalk](#)

YouTube: [NOVA Medical Products](#)